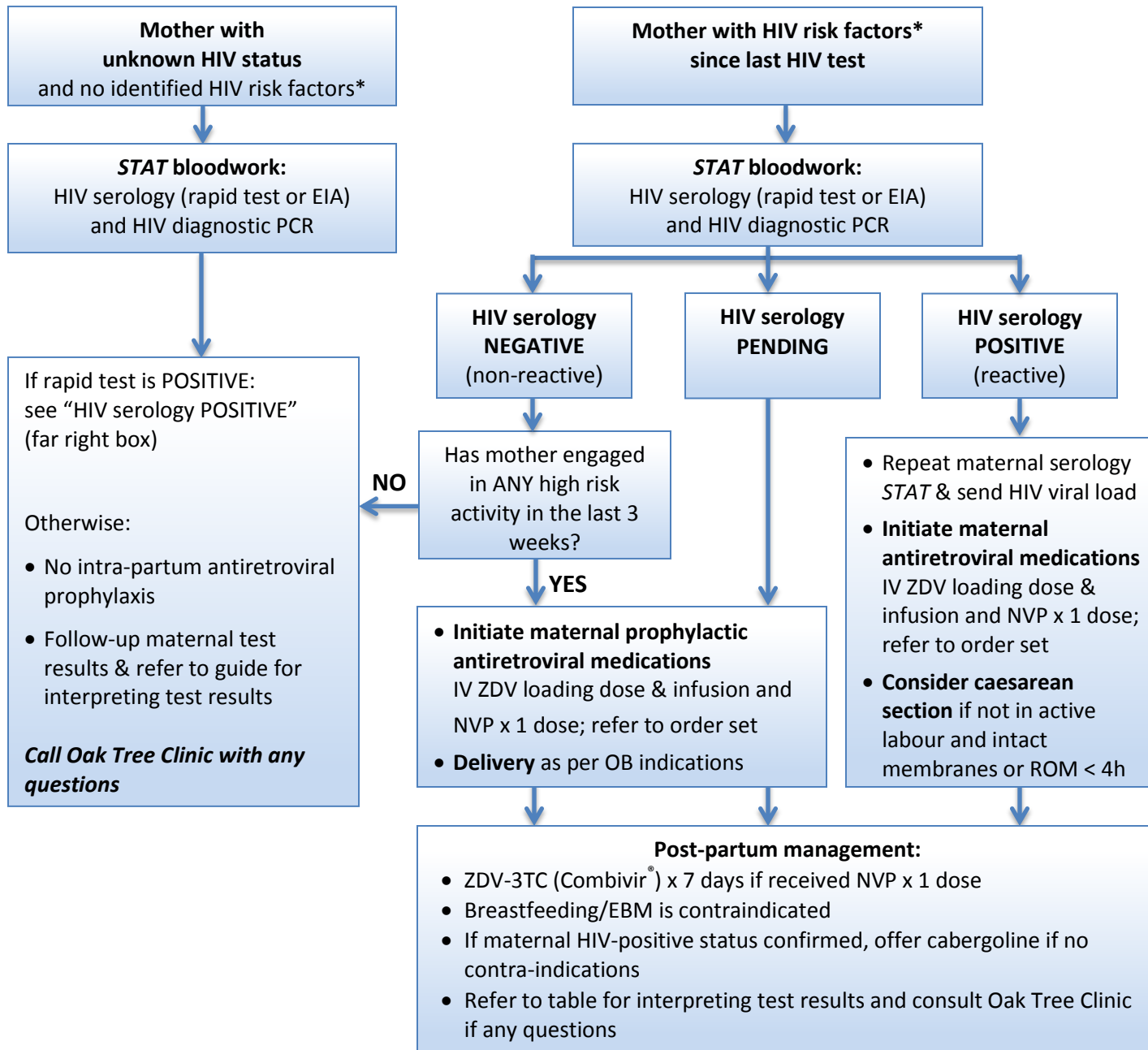


INTRA-PARTUM MANAGEMENT: Woman with unknown HIV status, or HIV risk factors since last test



- * HIV risk factors include:**
- Self-identifies as at risk for HIV
 - Engaged in sex work
 - Injection drug use
 - Sex partner of person infected with HIV or using injection drugs
 - Sexually transmitted infection during pregnancy
 - From a population with a high prevalence of HIV (e.g. recent incarceration or from an HIV-endemic country)

QUESTIONS?

Oak Tree Clinic staff (604-875-2250) are available to provide telephone advice Monday-Friday 08:30-16:30.

After 16:30 and on weekends, contact BC Women's Hospital (604-875-2161) and ask for the Level 1 Obstetrician on call.

Additional resources:

- Pre-printed order sets
- Guide for interpreting test results
- [Oak Tree Clinic website](#)

ZDV = zidovudine, 3TC = lamivudine, NVP = nevirapine, EIA = enzyme immunoassay, PCR = polymerase chain reaction, EBM = expressed breast milk